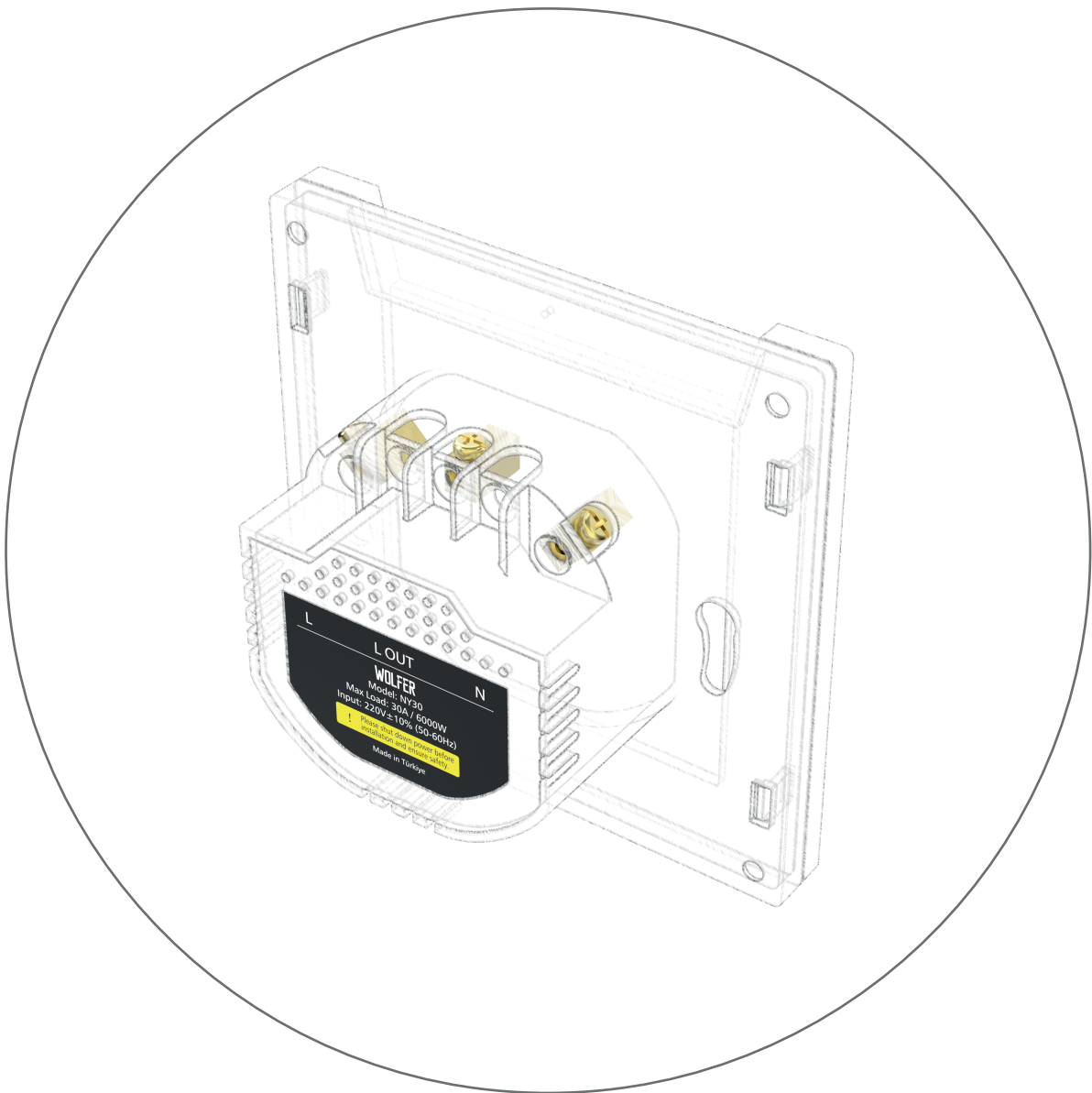


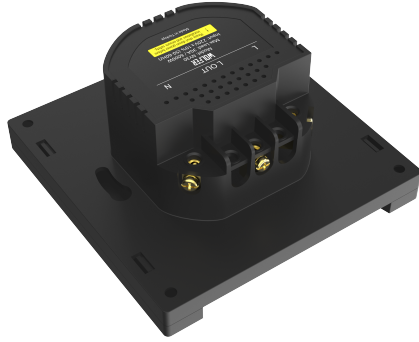
# WOLFER®



**NY30 Energy Saver**

en-EN

## Details;



## Technical Specifications;

**Operating Voltage:** 220V AC / 50Hz

**Maximum Current:** 30A relay output

**Card Technology:** 13.56MHz RFID / MIFARE compatible

**Delay Off Function:** 15-second delay after card removal

**Indicator:** LED status light

**Material:** Flame-retardant ABS housing

**Installation Type:** Flush-mounted, compatible with standard 86x86 mm wall box

**Protection:** Overload and short-circuit protection

**Application:** Hotels, apart hotels, and residences

**Energy Saving:** Reduces unnecessary power consumption when the room is unoccupied

**Compatibility:** Compatible with hotel door lock card systems

**Color Options:** White / Black / Gold

**Dimensions:** 86 x 86 mm

**Operation:** Power activates when the card is inserted and deactivates after the card is removed.

MADE IN TÜRKİYE